

Southwest corner Section 14, Township 12 North, Range 70 West

CERTIFIED LAND CORNER RECORDATION

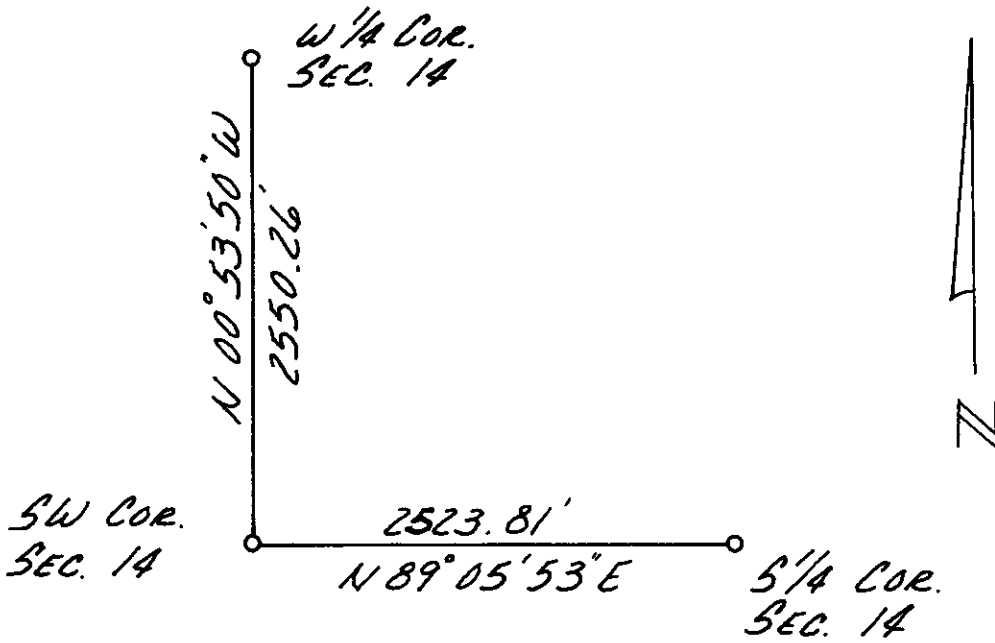
DESCRIPTION OF CORNER EVIDENCE FOUND, AND ORIGINAL RECORD (if known)

The original corner was a sandstone 20" x 10" x 8" in a mound of stone, marked with three notches on the South side and two notches on the East side. Old fence line East and North

DESCRIPTION OF MONUMENT AND ACCESSORIES ESTABLISHED TO PERPETUATE THE ORIGINAL LOCATION OF THIS CORNER:

Set a 5/8 inch copper rod with 1 1/2 inch copper cap stamped with a P.E. & L.S. 692 at fence intersection
From the corner to ties
Northwest 38.40 feet to nail and flagging in 8" tree
Southwest 26.20 feet to nail and flagging in rock
North Northwest 28.50 feet to nail and flagging in 8" tree

SKETCH, WITH COURSE AND DISTANCE TO ADJACENT CORNER IF DETERMINED IN THIS SURVEY. (May Sketch or Paste Reproduction on Reverse Side.)



I, Neil M. Kruback certify that I have carefully performed or reviewed the work done on the diagrammed corner as reported on this recordation form and approve the same.

Neil M. Kruback
Signature of Surveyor

692
Registration No.

STATE OF WYOMING,
Office of Clerk and Recorder,
County of Taramie

This "corner record" was filed for record on the 18 day of December, 1973, was noted on the cross-index plat and is assigned page No. _____, in book No. _____.

John B. Harrison
County Official

Cross Index No.	<u>N-17</u>	T.	<u>12 N</u>	R.	<u>70W 6thP</u>	Mer.
		T.		R.		Mer.
		T.		R.		Mer.
		T.		R.		Mer.
		T.		R.		Mer.
		T.		R.		Mer.
		T.		R.		Mer.

Photographed

Indexed *BB*

Posted

Assessor

The State of Wyoming }
 County of Laramie } SS

This instrument was filed for record
 at 11 27 o'clock A. M. on the
15 day of December
 A. D. 1973 and duly recorded in
 Book _____ on _____

[Signature]

County Clerk of District
[Signature]